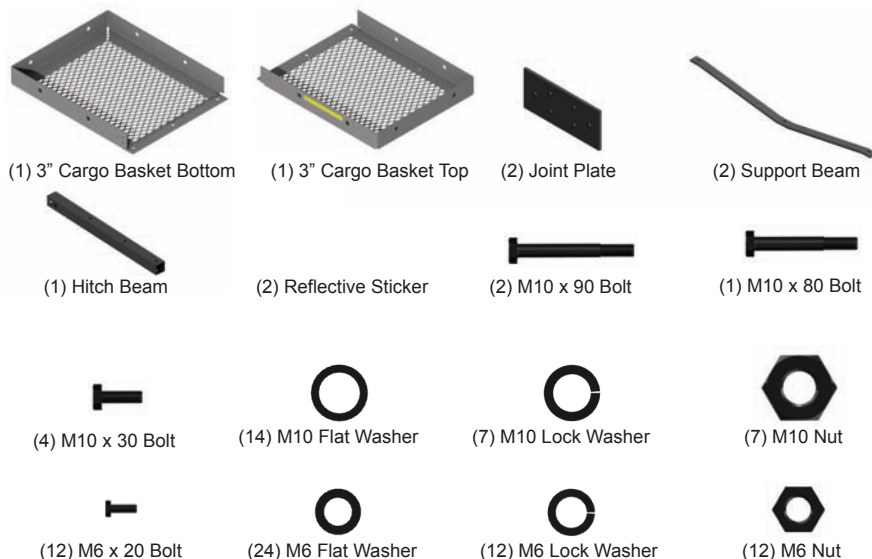


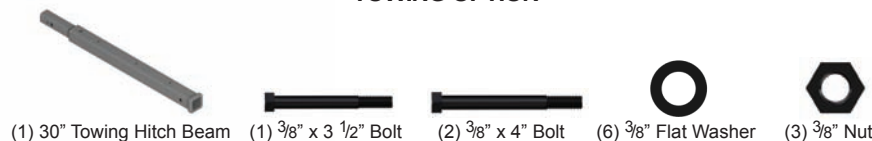


## PARTS

NOTE: B-Dawg carriers are attached with your standard Hitch Pin (not included).



## TOWING OPTION



## FOLDING OPTION



## TOOLS



Socket Set



Wrench Set

## WARNING

To avoid risk of injury to yourself and others on the highway and/or property damage, read and follow all instructions accompanying this product as well as specific warnings regarding weight limits, loading and handling, and roll over risks contained in your Vehicle Owner's Manual and the Hitch Manufacturer's Manual.

1. Read all instructions for future reference.
2. Carrier hitch pins and locking keys must be secured before each use.
3. Distributed load must not exceed the lesser of hitch manufacturer's tongue weight rating or vehicle manufacturer's rear load limit.
4. Do not stand on the carrier.
5. Do not block taillights, safety equipment, or exhaust pipes.
6. Do not transport flammable/combustible items on Carrier.
7. Only use with a Class 3 or 4 hitch. Most Class 3 hitches are limited to 500 lbs. total hauling capacity. **Note: Wasp and Wolf aluminum carriers are limited to 400 lbs.**
8. Do not put B-Dawg carrier onto a 5th wheel trailer or any other kind of trailer.

## LIMITED WARRANTY

The Limited Warranty on the B-Dawg Carrier.

EZRA DISTRIBUTING, INC warrants the carrier and related components. This warranty applies to any part found to be defective due to material and/or workmanship when inspected at the factory of Ezra Distributing, Inc. in Winamac, IN. Ezra Distributing, Inc. will, at its option, repair or replace defective parts to the original purchaser at no charge other than transportation. Sales receipt as proof of date of purchase is required, which will be returned. Ezra Distributing, Inc. assumes no liability for labor charges made in performance of this warranty.

The warranty periods are as follows from date of purchase:

**CARRIER FOR 1 YEAR, VOID IF:** frame is broken or bent due to abuse. example: (underside scraped abusively)

**ALL WARRANTIES ARE VOID IF:** the carrier has been rented, used under abnormal conditions, or subjected to abuse, misuse, neglect, or improper maintenance.

All warranties should be handled at point of purchase unless other arrangements are made.

Ezra Distributing, Inc. is not liable for any damage claim or liability claim, personal or otherwise resulting from operation of this carrier in any way. All transportation charges for items returned for warranty evaluation and/or replacement are to be borne by the customer.

For one (1) year from the date of purchase, Ezra Distributing, Inc. will repair or replace for the original purchaser, without charge, any part or parts manufactured by Ezra Distributing, Inc. and found, upon examination at our factory in Winamac, to be defective in materials and/or workmanship.

All transportation charges on parts submitted for replacement under this warranty must be borne by the purchaser. This warranty does not apply to parts not manufactured by Ezra Distributing, Inc. Their manufacturer may warrant these items. This warranty does not apply to any part which has been damaged by accident, alteration, abuse, improper adjustment, normal wear, or any other cause beyond our control.

Use of replacement parts other than genuine Ezra Distributing, Inc. parts may impair the safety of your machine and void this warranty.

## IMPORTANT

THIS WARRANTY IS VOID UNLESS THE PRODUCT REGISTRATION CARD IS FILLED OUT COMPLETELY AND RETURNED TO THE FACTORY AT WINAMAC, INDIANA WITHIN TEN (10) DAYS OF PURCHASE.

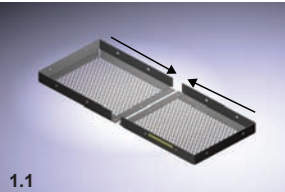
**OUR WARRANTY COVERS OUR PRODUCT FOR ONE YEAR. WE ARE NOT ABLE TO EXCHANGE USED B-DAWG CARRIERS FOR REFUNDS OR NEW CARRIERS.**

©Ezra Distributing, Inc.



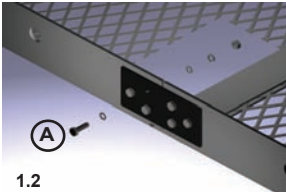


## STEP 1



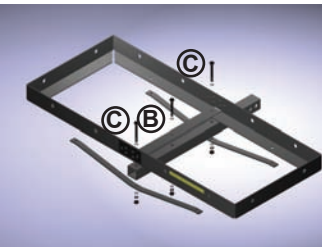
1.1

Place the two cargo baskets end to end, overlapping the centers (Figure 1.1). Connect the two overlapping cargo baskets using the joint plate and Bolt Assembly A (six for each plate). Bolt Assembly A consists of (1) M6 x 20 Bolt, (2) M6 Flat Washers, (1) M6 Lock Washer, and (1) M6 Nut. The plate attaches on the outside of the cargo baskets, as shown (Figure 1.2)



1.2

## STEP 2



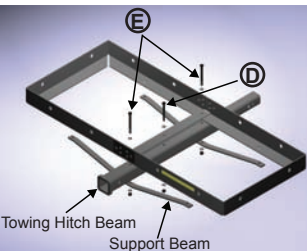
**Note: If you have a towing option, skip to the Towing Option Instructions below.** Position the hitch beam underneath the cargo baskets, with the caution sticker facing away from the hitch pin holes (i.e. away from the vehicle). Lightly fasten the hitch beam to the cargo baskets using Bolt Assembly B in the center bolt hole. Bolt Assembly B consists of (1) M10 x 80 Bolt, (2) M10 Flat Washers, (1) M10 Lock Washer, and (1) M6 Nut.

Place the two support beams underneath the hitch beam, and fasten using Bolt Assembly C (one per support beam). Bolt Assembly C consists of (1) M10 x 90 Bolt, (2) M10 Flat Washers, (1) M10 Lock Washer, and (1) M10 Nut. Tighten the bolt assemblies, being careful not to over torque, as the hitch beam may crush. *Note: Tray grating has been removed for illustrative purposes only.*



The caution sticker must face away from the vehicle!

## Towing Option Instructions



Towing Hitch Beam  
Support Beam

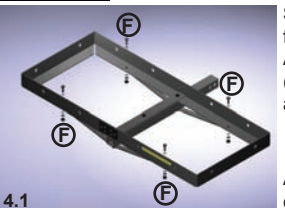
Position the towing hitch beam underneath the cargo baskets, with the caution sticker facing away from the hitch pin holes. Lightly fasten the hitch beam to the cargo baskets using Bolt Assembly D in the center bolt hole. Bolt Assembly D consists of (1)  $\frac{3}{8}$ " x  $3\frac{1}{2}$ " long bolt, (2)  $\frac{3}{8}$ " Flat Washers, and (1)  $\frac{3}{8}$ " Nut.

Place the two towing option support beams underneath the hitch beam, and fasten using Bolt Assembly E (one per support beam). Bolt Assembly E consists of (1)  $\frac{3}{8}$ " x 4" long bolt assembly, (2)  $\frac{3}{8}$ " Flat Washers, and (1)  $\frac{3}{8}$ " Nut. Tighten the bolt assemblies, being careful not to over tighten, as the hitch beam may crush. *Note: Tray grating has been removed for illustrative purposes only.*



The caution sticker must face away from the vehicle!

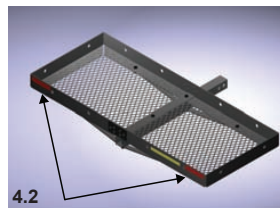
## STEP 3



4.1

Secure the ends of the support beams using four sets of Bolt Assembly F (Figure 4.1). Bolt Assembly F consists of (1) M10 x 30 Bolt, (2) M10 Flat Washer, (1) M10 Lock Washer, and (1) M10 Nut.

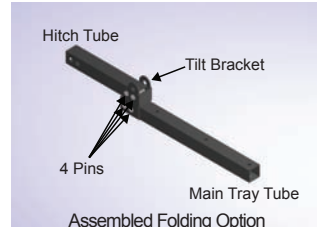
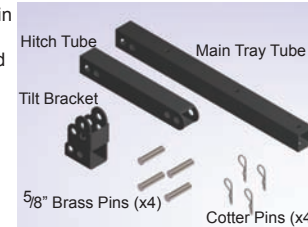
Apply the reflective stickers to rear corners of carrier as illustrated (Figure 4.2).



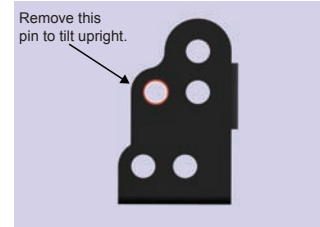
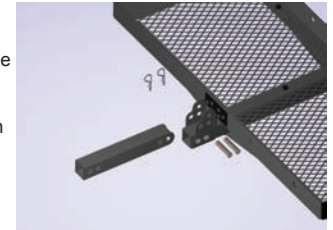
4.2

## Folding Instructions

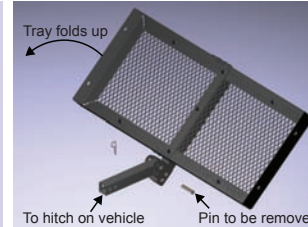
**Step 1:** Ensure that you have the Main Tray Tube, Hitch Tube, Tilt Bracket, Cotter Pins (x4), and  $\frac{5}{8}$ " Brass Pins (x4).



**Step 2:** Place Tilt Bracket upright. Slide Main Tray Tube on bottom of Tilt Bracket so that the two holes line up with the holes in the bracket. Insert the Brass Pins and Cotter Pins. In the two holes just above the main tray tube, place the shorter Hitch Tube with the rounded end toward the bracket and face down next to the main tray tube, as shown. Place the two other brass pins through the bracket and hitch tube along with the corresponding cotter pins. There should be one empty hole on the bracket at the top.



Remove this pin to tilt upright.

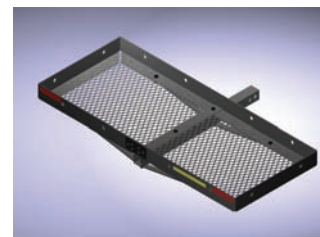


Tray folds up to tilt upright.  
To hitch on vehicle Pin to be removed

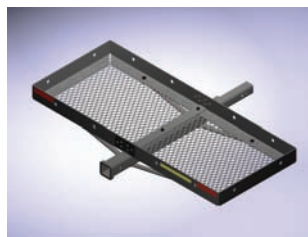


**Step 3:** To fold the carrier upright, the pin in the hitch tube and bracket closest to the vehicle should be removed. After folding the carrier, return the pin and cotter pin to the hole in the bracket which was previously unoccupied. This will lock the carrier in place. **Note: In the folded position, the distance from the center of the hitch pin to the main tray tube is 12".** In addition, you should account for the height of the attached tray (3 inches).

## Assembled 3" Carriers



Standard 3" Cargo Carrier



Towing 3" Cargo Carrier



Folding 3" Cargo Carrier